



February 14, 2024, 2024
Village of Rhinebeck
76 East Market Street
Rhinebeck NY 12572

c/o:

Ms. Brandee Nelson
Tighe & Bond
47 West Market Street
Rhinebeck NY 12572

6 Mulberry Street (the Project)
Rhinebeck NY 12572
MEMO: On and Off-Street Parking

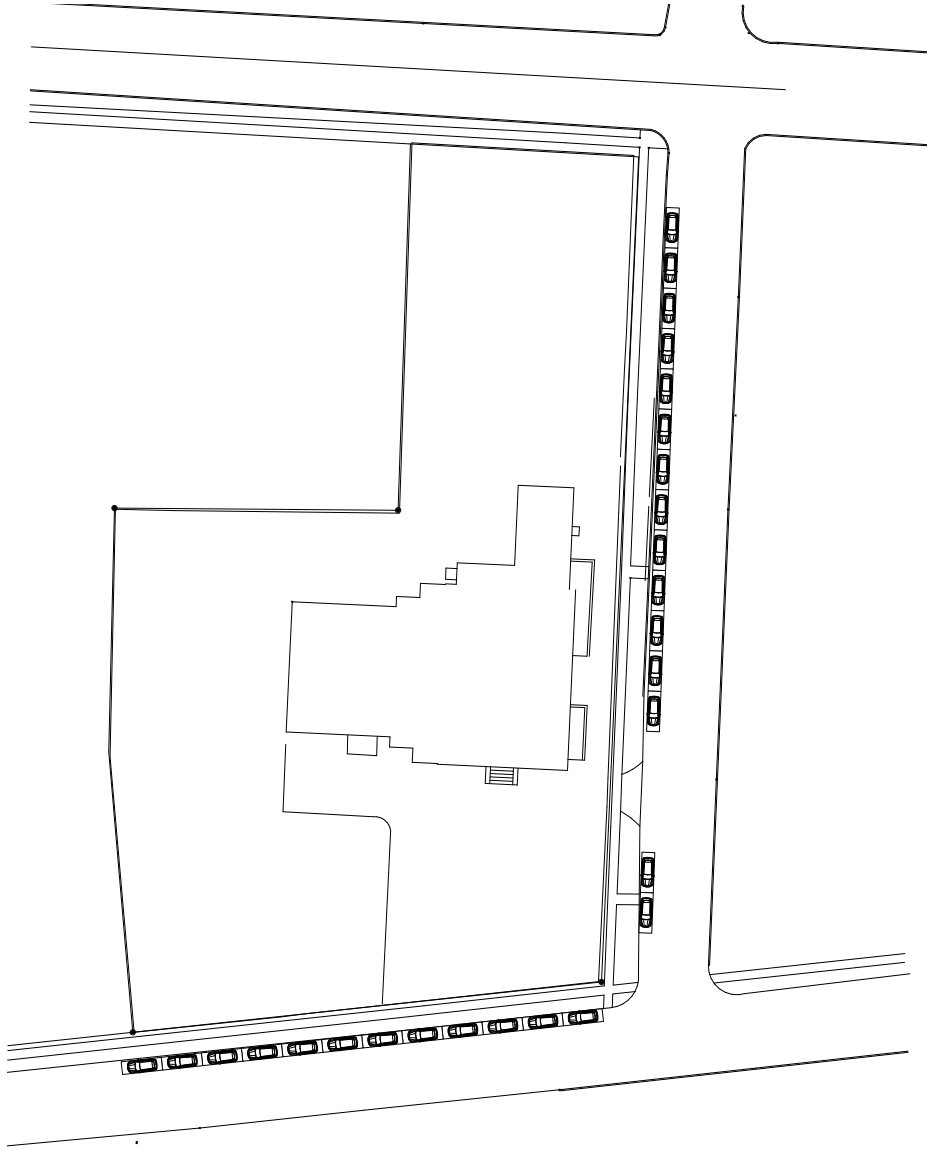
Per your request please find the REVISED Existing and Proposed on street parking calculations (see page 2 and 3). For the purposes of this analysis, we assumed a parallel parking space that is 22 feet by 7 feet. No car shall be parked within 20 feet of an intersection. The proposed site plan will reduce parking on Mulberry Street by 2 spaces and on South Street by 6 spaces.

The number of spaces proposed for off-street parking at the Bulkeley building is #16.

Thank you,

A handwritten signature in black ink, appearing to read 'DRuff', written over a horizontal line.

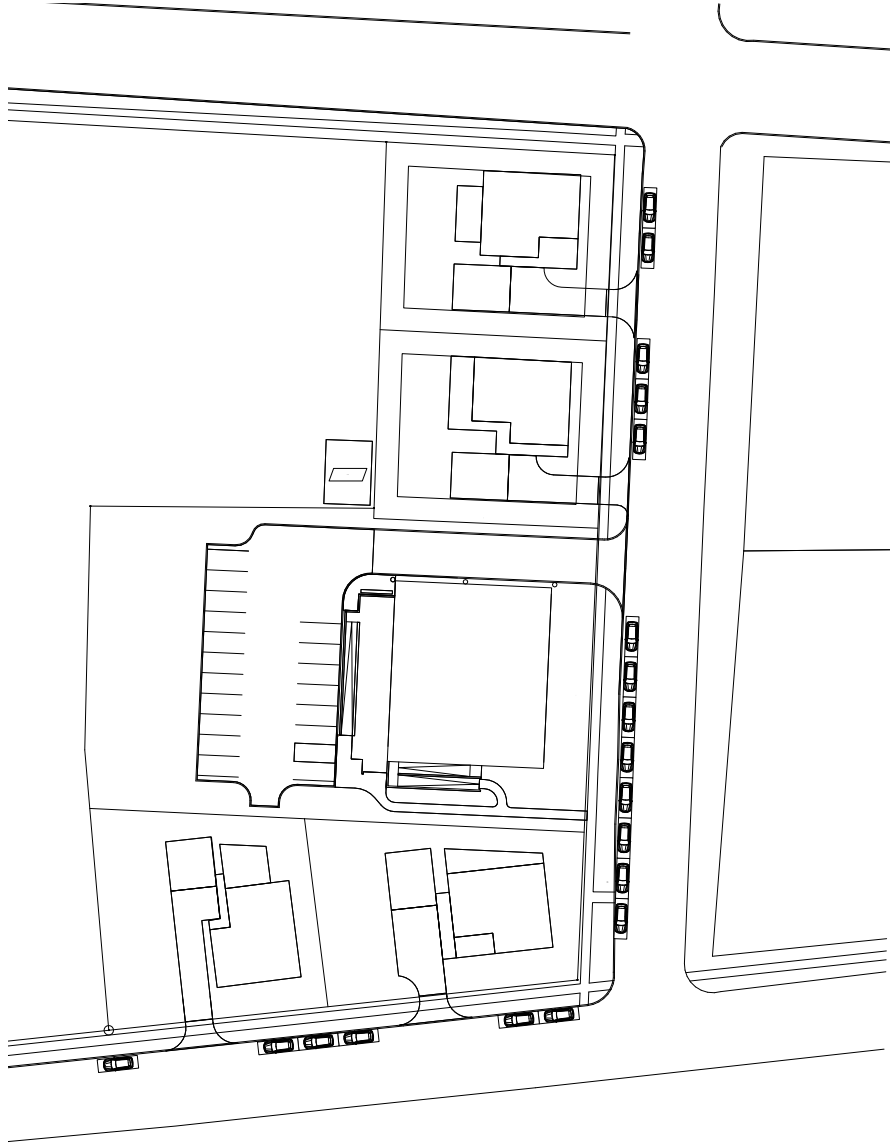
David Ruff AIA



1

Existing On Street Parking Total #27

Scale: 1:1000



2 Proposed On Street Parking Total #19
Scale: 1:1000